



Now Part of



Littelfuse®

Since 1942...

Basler Electric products have provided the reliability and superior performance required to support the power industry around the world.

Always Innovating. Always Evolving.



www.basler.com





Now Part of



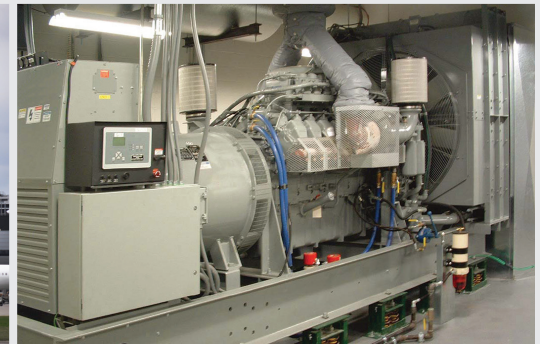
Littelfuse®

ADAPTABILITY

Basler Electric provides a wide range of products for the control and management of electric power worldwide. Our products are designed to provide solutions for industries and applications where reliability is essential.

Industries Served

- Industrial
- Marine
- Commercial
- Power Distribution
- Power Generation



Typical Applications

Voltage Regulation and Excitation Control of Rotary or Static Excited Machines:

- Prime Power Generator
- Utility Power Generation
- Standby Genset
- Synchronous Motor
- Synchronous Condenser
- Pump Storage Generator

Protection and Control:

- Feeder
- Generator
- Intertie
- Transformer
- Motor
- Bus
- Breaker

Control of Generator Sets:

- Emergency Standby
- Prime Power
- Peak Demand
- Portable
- Combined Heat and Power (CHP)



Excitation Systems

Basler is the complete excitation system solution provider for any new or retrofit application up to 10,000 Adc.



RELIABILITY



Voltage Regulators

With more than 50 years of industry leading experience in AVR design and application, Basler's digital systems and analog designs provide the perfect solutions for any application.



Protective Relay Systems

Basler makes superior protection equipment that eliminates settings errors, are easy to configure and set, and provides reliability for a wide range of protection solutions.



Genset Control

Basler controls are available for any application, including simple stand alone up to complex, paralleled systems. Flexible controls with PLC functionality, protection, and load sharing along with our simple configuration make difficult applications easy.





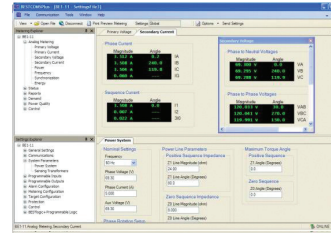
Now Part of



Littelfuse®

Software Interface

BESTCOMSPPlus® software for Basler's Power Systems products is easy to use and features a common platform for all products which reduces training time, commissioning time, setup expenses, and potential programming errors that may cause false trips.



Service & Support

- 24/7/365 Customer support
- Field service for commissioning and troubleshooting support
- Regional technical support worldwide
- Application and design support
- Complete engineering and installation services
- Private labeled and custom engineered products

Basler Services, LLC
A Wholly Owned Subsidiary of Basler Electric



Basler Services, LLC is a full service electrical engineering and field services company for Excitation, Hydro Turbines, and Relay Applications, that serves the power generation, power distribution, and controls markets. Basler Services specializes in consulting, design and system studies, field service, testing and maintenance, system upgrades, and turnkey services.

Our core purpose is to enhance people's lives by developing highly reliable solutions that add quality to their lives. This is achieved through innovation and performance of our core values.

Headquartered in Highland, Illinois, Basler Electric is a family owned business with a global presence. That global presence helps us identify the needs of specific markets and applications worldwide and provide solutions with quality products and services to meet our customers' requirements.



Now Part of



Littelfuse®

Basler Electric Worldwide Headquarters
12570 Route 143 • Highland IL 62249-1074
1.618.654.2341 • info@basler.com

Suzhou, PR, China
86.512.8227.2888
chinainfo@basler.com



www.basler.com